

“Pristine Vision without Glasses: Now possible for your entire family!”

*-within scientific limits

Total Refractive Solutions (TRS)

TRS is a bouquet of surgical procedures offered at Wavikar Eye Institute for the comprehensive management of refractive errors **irrespective of age, number of glasses or the type of problem.**

So probably for the first time, almost no one will have to be disappointed due to a lack of a suitable procedure.

Why we don't want to wear glasses ?

Glasses or Contact Lenses help to focus the images on the retina and give clear vision. Whereas Contact Lenses are considered cosmetically superior and therefore preferred over glasses, they cause problems of allergies and intolerance. Glasses, on the other hand, interfere in active lifestyles and vocations such as sports, careers in armed forces, Merchant Navy etc. Glasses can also be an impediment in matrimonial alliances in some instances.



What is the solution ?

Total Refractive Solutions (TRS). The following procedures are offered under this:

LASIK

LASIK or Laser Refractive Surgery is still the most commonly performed corrective refractive surgery in the world. It is fast, safe, predictable and offers accurate results for numbers between -10 to +6 D.

With Surgeons having an experience of more than 16 years and 10000 surgeries and options like Custom LASIK, EPILASIK, Lasek and PRK: Wavikar Eye Institute offers the widest choice for anyone seeking this procedure.

Although most patients can avail the benefits of LASIK some are considered unsuitable due to medical reasons.

Phakic Intraocular lens :

In this procedure an intraocular lens is placed above the natural lens of the eye. Spectacle numbers up to -20 D can be corrected by this method. It is a 15-minute procedure and patients experience an immediate improvement in quality of vision. There are many subcategories in this like Verisyse, ICL, Toric ICL, PRL, and Acrysof Cachet. Detailed clinical examination determines the best suited lens to a particular eye and person.

Presbyopic Lens Exchange (PRELEX)

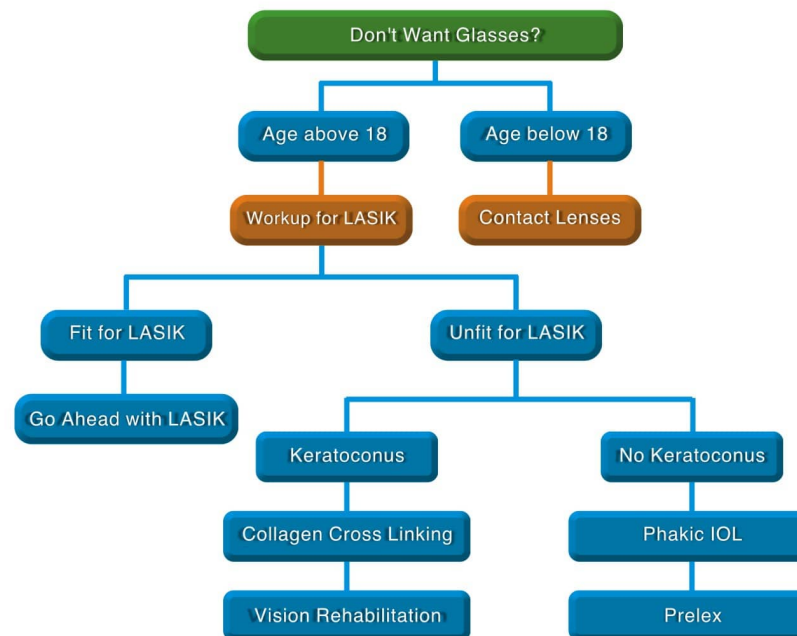
This includes removal of crystalline lens of the eye and replacing it with artificial lens of appropriate number (CLE or clear lens exchange). A wider range of high minus number and plus number can be corrected by this procedure. A multifocal lens implanted in this operation can result in freedom from glasses for both far and near (PRELEX or Presbyopic lens exchange)

Selection Of Appropriate Procedure For You

You will first undergo a **Comprehensive Examination** to determine your exact refractive error and which of the above procedures could be suitable for you.

If you are eligible for more than one procedure our counsellor will explain to you the pros and cons of each and help you make an informed decision.

Finally you will undergo an Examination by the consultant who will evaluate your eye as well as the results of the tests thoroughly and decide which is the best corrective procedure for you.



About us

Wavikar eye institute is a world-class, exclusive facility dedicated to the delivery of compassionate and Holistic Eye Care to all patients. With constant up gradation of processes and equipments, we have maintained leadership in eyecare, delivering the latest and the best facilities that the city of Thane has to offer. With 35000 sq. Ft. Area , 7 state-of-the-art operation theaters and opening of subsidized services under the banner of INDIRABAI CHARITABLE WING, the institute is developing into a major tertiary referral center for eye care in and around Thane city. We have recently started our Optometry College in affiliation with Yashwantrao Chavan Maharashtra Open University wherein we are offering B.SC. (Optometry) Degree. Highly equipped Ophthalmic care facility and experienced faculty would help candidates achieve valued hands on experience along with degree to shape up their future.



WAVIKAR
EYE INSTITUTE



PRISTINE VISION
LASER CENTER



INDIRABAI
CHARITABLE WING



VISHWANATH
EYE BANK

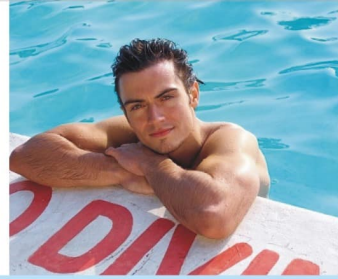
4th & 5th floor, Amber Arcade,
Near Lodha Paradise, Bhiwandi bypass road,
Majiwade, Thane (W).

Ph. No. 399 18 399; 399 18 300; 98337 18 555

Email - contact@wavikareye.com Website - www.wavikareye.com



Freedom
From
Glasses



For
Everyone



Lasik
Epilasik
Prelex



Total
Refractive
Solutions



Phakic Iol
C3R
and many
more...



WAVIKAR
EYE INSTITUTE

An NABH accredited eye Institute